

Model 2884 McKinley



In addition to its gorgeous curb appeal, this home is practical...

from an abundance of storage to its amazing open floor plan.

This stunning home is one of our finest, featuring nearly 2,500 square feet on the main floor and breathtaking details both inside and out. In addition to its gorgeous curb appeal, this home is practical—from an abundance of storage to its amazing open floor plan.



Model Home 2884

2,884 sq. ft.

3 Bedrooms

2 Bathrooms

3 Car Garage

Other Features:

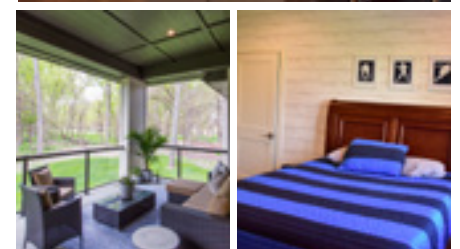
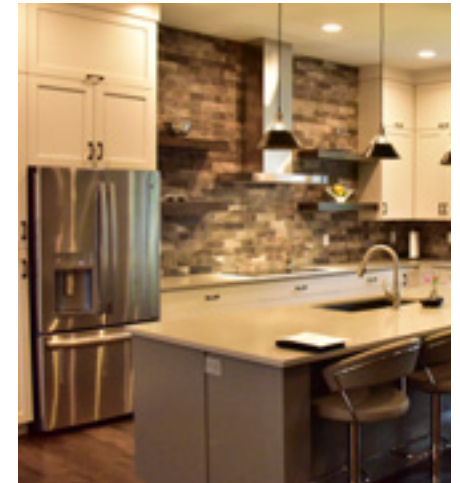
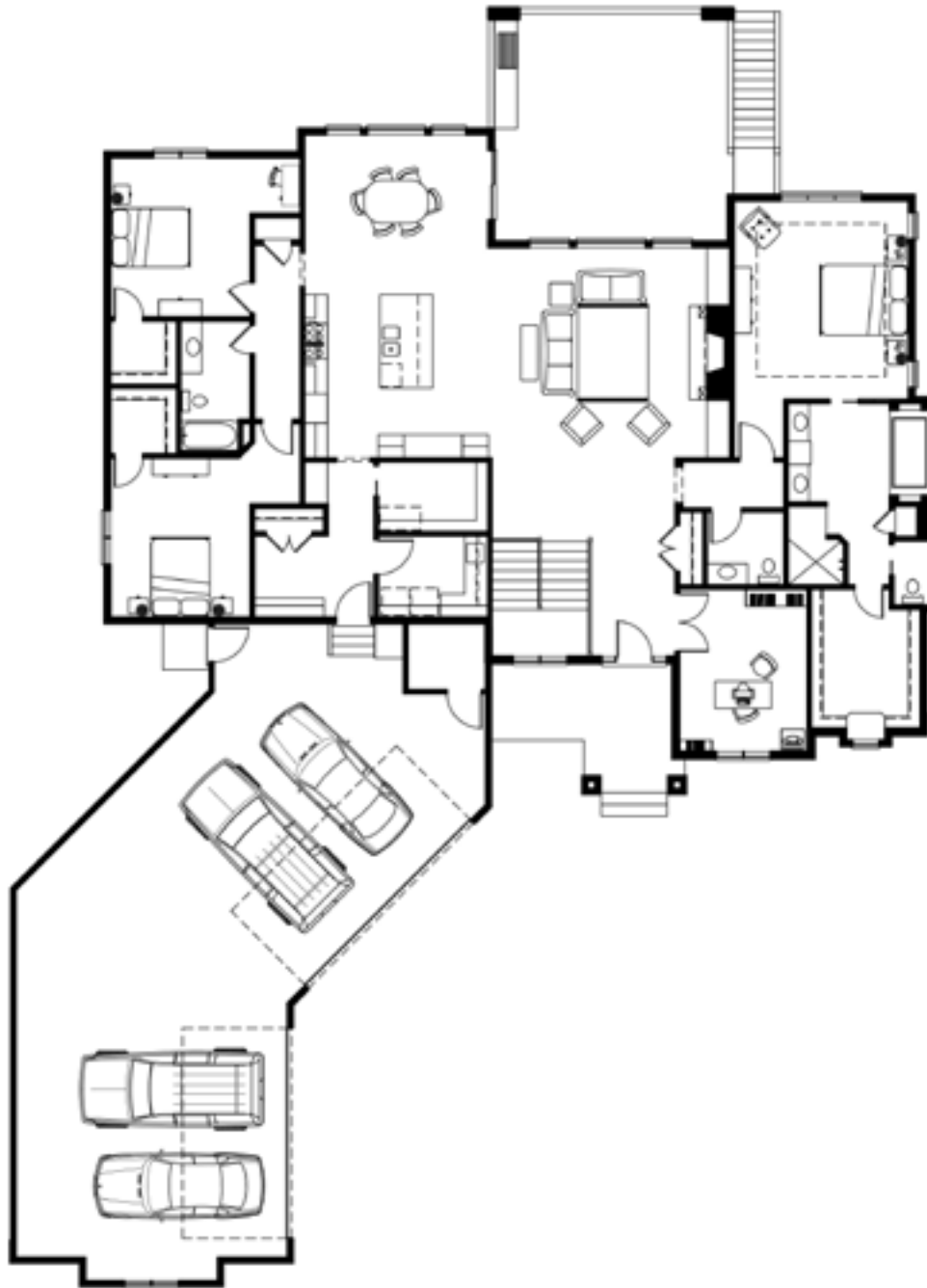
Master Suite Walk-In Closet

Master Bath Walk-In Shower

Custom Closet Shelving

Custom Kitchen

All three bedrooms and the laundry room feature walk-in closets, so keeping life organized is never an issue. The mudroom includes stylish lockers and the oversize garage is designed to with extra space for even more storage in the back.



605.232.4000

IJHomes.com