



A beautiful, contemporary design with incredible lines...

Open living space flows from kitchen to dining to family room.

Sleek design with everything in its place. The Model 1954 home features a beautiful, contemporary design with incredible lines. Coming in at just under 2,000 sq. ft., your main open living space flows from kitchen to dining to family room to covered patio, providing plenty of space for special occasions—or every day use.



Model Home 1954

1,954 sq. ft.

3 Bedrooms

2 Bathrooms

3 Car Garage

Other Features:

Covered Patio

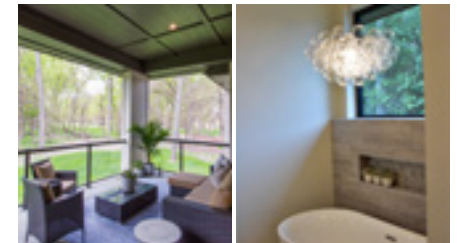
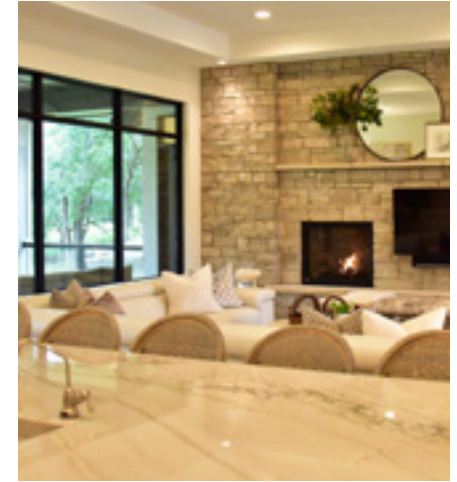
Custom Open Concept Kitchen

Convenient Drop Zone

Beautiful Solid Surface
Countertops Throughout

Gas Fireplace

When it's time to retire for the night, the spacious master suite is your perfect getaway. The 2nd and 3rd bedrooms are located on the opposite side of the house, for a level of privacy not often found in a ranch.



☎ 605.232.4000

🌐 IJHomes.com