

Multi-Family 1750 Triplex







An open floor plan that makes the most of your living space...

featuring a large kitchen bar that's sure to be everyone's favorite space..

Meet the perfect combination of modern sophistication and classic craftsman style in our 1J Homes triplex townhomes. Each home is designed to maximize your space for living. Entertaining is easy thanks to a spacious open floor plan. Your kitchen, dining and living rooms easily flow from one room to another, perfect for hosting an intimate gathering or a large crowd.



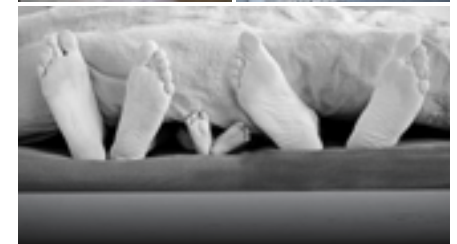
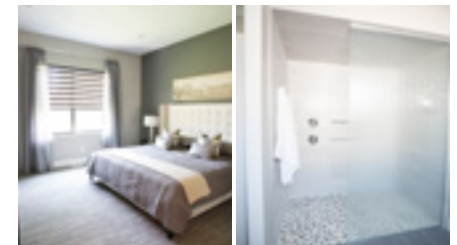
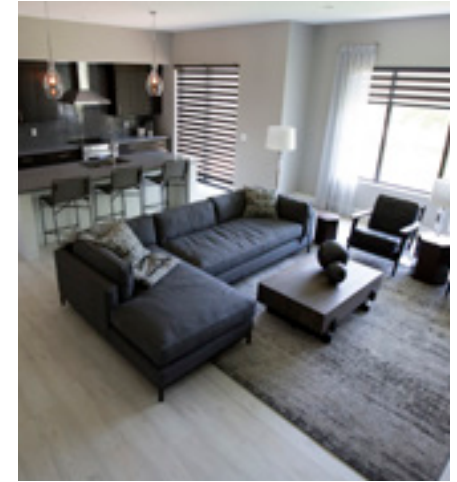
Model Home 1750 Triplex

-  1,750 sq. ft.
-  2 Bedrooms
-  2 Bathrooms
-  2 Car Garage

Other Features:

- Open Floor Plan
- Custom Kitchen
- Contemporary Fireplace
- Custom Closets
- Optional Finished Basement

Explore one of our options for finishing the lower level—or customize a finish of your own!



☎ 605.232.4000

🌐 1JHomes.com