

Model 1566 Avant







The open floor plan features a custom kitchen...

overlooking the great room and a gorgeous corner fireplace.

One of the best features of this smartly designed single-story is the spacious master suite featuring a custom walk-in shower, double vanity and a roomy walk-in closet. You'll also find a private second bedroom in the 1566 Avant with an attached bath, which makes it a perfect place for a home office.



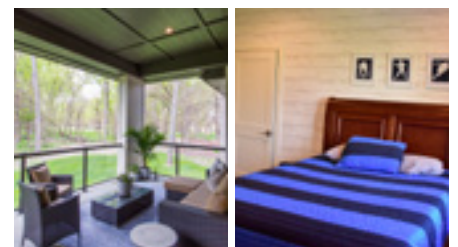
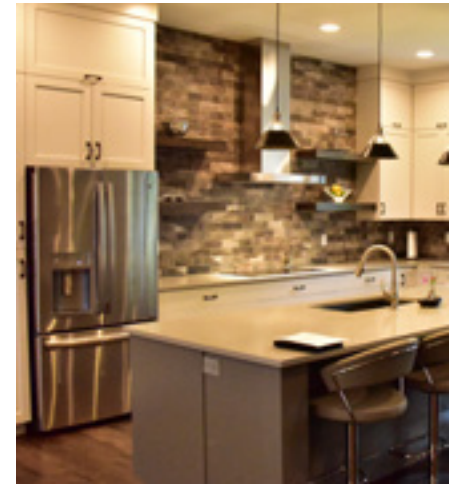
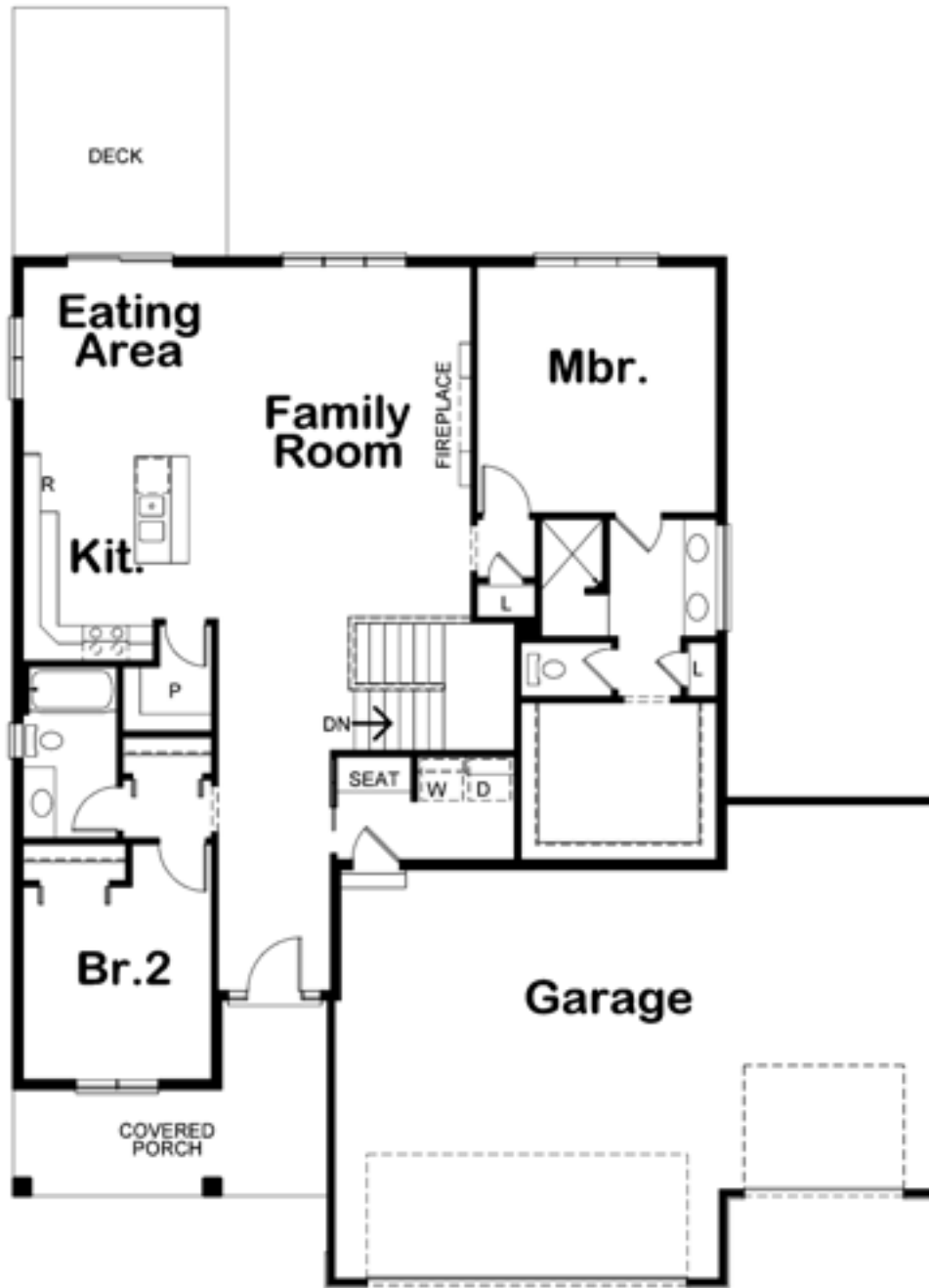
Model Home 1566 Avant

-  1,566 sq. ft.
-  2 Bedrooms
-  2 Bathrooms
-  3 Car Garage

Other Features:

- Insulated Garage
- Custom Kitchen & Closets
- Great Room with Fireplace
- Expansive Outdoor Living
- Great Room Vaulted Ceilings

The open floor plan features a custom kitchen overlooking the great room and a gorgeous fireplace, with plenty of space for entertaining thanks to bar seating along the kitchen island. There's also a lower level featuring plenty of space for extra bedrooms, an exercise room or the man cave of your dreams.



☎ 605.232.4000

🌐 1JHomes.com